

connected linea mini retrofit kit.

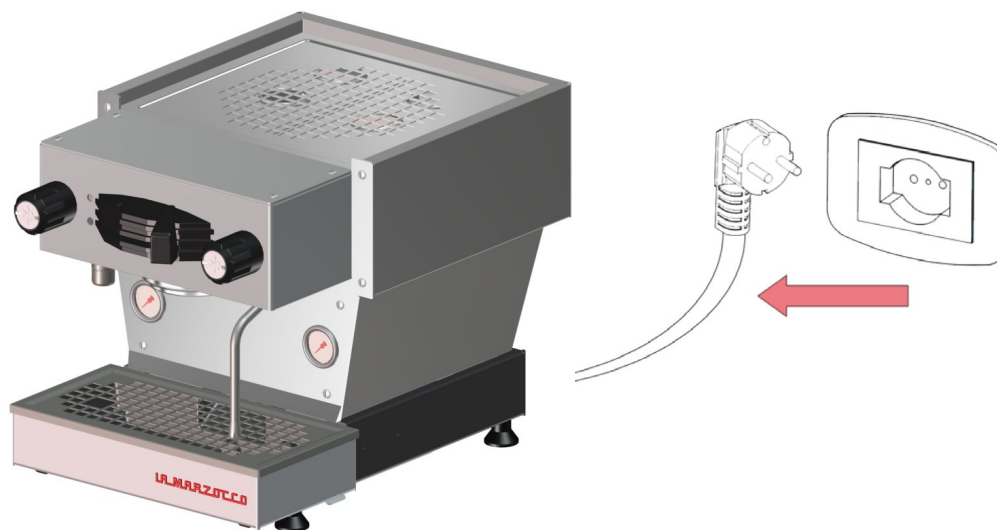


la marzocco

handmade in florence

safety first!

BEFORE TO START, PLEASE MAKE SURE YOUR MACHINE IS DISCONNECTED FROM THE ELECTRICAL SUPPLY.



la marzocco
handmade in florence

remove the cup tray and electronic box.



disconnect all connectors from the board.

We recommend marking each wire before to remove it.

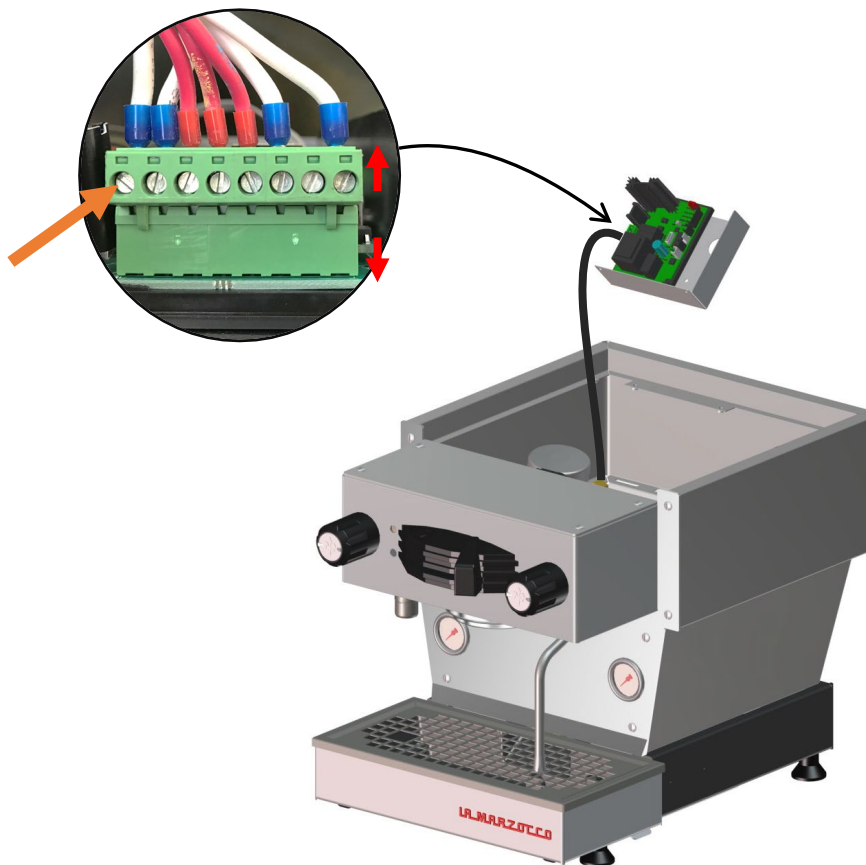
ATTENTION:

All high voltage wires are connected to the board with the green quick connector which is shown in the picture.

This connector has a drop of glue to prevent from accidentally disconnecting and may result difficult to separate.

Should you find it too hard to pull out, we suggest to remove each wire individually by untightening the flat head screw which is indicated with the orange arrow.

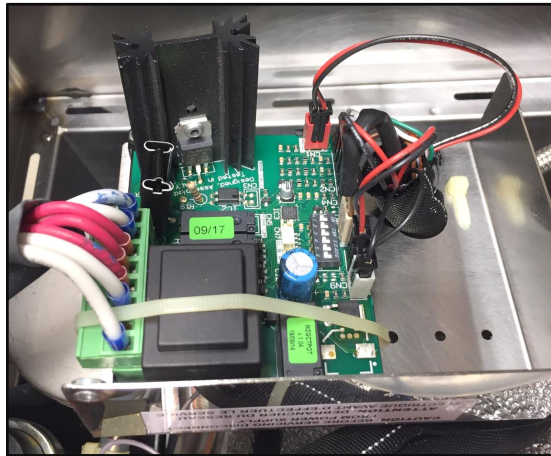
A new connector is provided in the kit for replacing if necessary.



la marzocco
handmade in florence

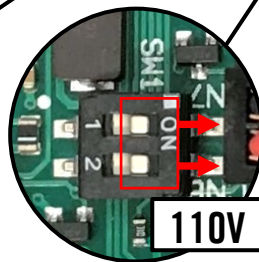
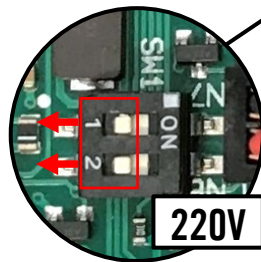
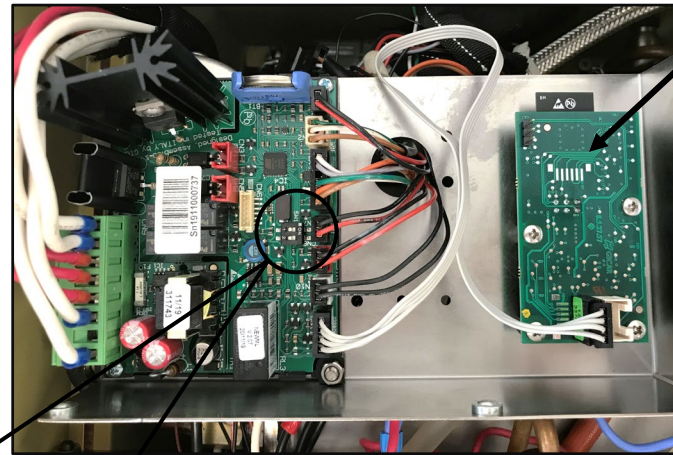
board re-wiring.

old electronic board.



(picture of the 220V version)

new electronic boards.



ATTENTION:

**MAKE SURE THE SELECTORS
ARE POSITIONED AS SHOWN**



la marzocco
handmade in florence

place the new electronic box in the machine.



locate the QR-code on the electronic box.



You should have found two QR-codes with the kit.

Stick one of them on the electronic box and stick the other one in the inside of the black frame (alongside the water tank).

Download the «LA MARZOCCO HOME» mobile app through the App store or Play store.

Open the app and point the QR-code with your smartphone camera. Now follow the instructions to activate online your kit, paying attention to insert the correct serial number of the machine as required.

Now you can reassemble the machine and plug it.

Follow the app's instructions step by step to complete the set up.



la marzocco

handmade in florence